

CADET® 3 ROUND FRONT COMPLETE TOILET

□ **2880 528ST**

- Vitreous china
- High efficiency, ultra-low consumption (4.8 Lpf/1.28 gpf)
- 12" (305mm) Rough-in
- EverClean® surface inhibits the growth of stain and odor causing bacteria, mold and mildew on the surface
- Features the Cadet 3 Flushing System
- Round front siphon action jetted bowl
- Fully-glazed 2-1/8" (54mm) trapway with 2" (51mm) ball pass
- Generous 9" x 8" (229 x 203mm) water surface area
- Close-coupled tank with flat tank cover for superior storage
- Oversized 3" (76mm) flush valve with chemical resistant flapper
- Chrome trip lever
- Speed Connect® tank-to-bowl coupling system
- 2 colour-matched bolt caps
- Colour matched solid plastic seat and cover with EverClean surface
- Wax ring gasket with closet bolts
- 100% factory flush tested
- 5 year warranty, 1 year warranty on toilet seat



Nominal Dimensions:

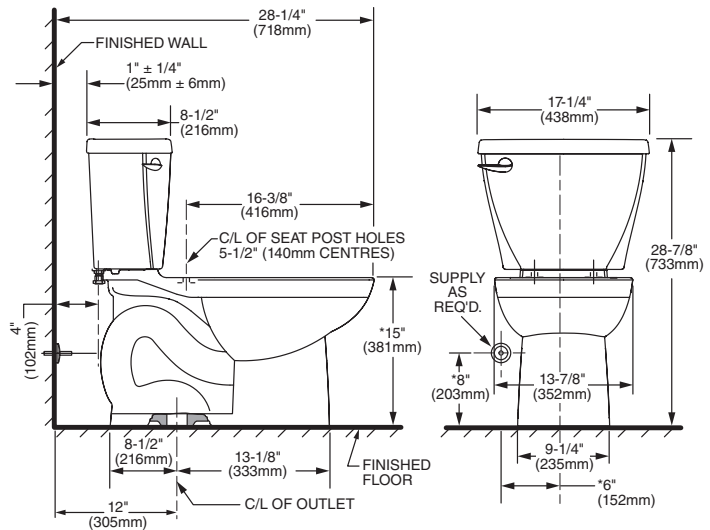
28-1/4" x 17-3/8" x 28-7/8" (717 x 441 x 733mm)

Fixture only, seat and supply sold separately

Compliance Certifications -

Meets or Exceeds the Following Specifications:

- ASME A112.19.2-2008/CSA B45.1-08 for Vitreous China Fixtures



NOTES:

THIS TOILET IS DESIGNED TO ROUGH-IN AT A MINIMUM DIMENSION OF 305MM (12") FROM FINISHED WALL TO C/L OF OUTLET. SUPPLY NOT INCLUDED WITH FIXTURE AND MUST BE ORDERED SEPARATELY. * DIMENSION SHOWN FOR LOCATION OF SUPPLY IS SUGGESTED.

IMPORTANT: Dimensions of fixtures are nominal and may vary within the range of tolerances established by ANSI Standard A112.19.2. These measurements are subject to change or cancellation. No responsibility is assumed for use of superseded or voided pages.

To Be Specified:

- Colour: □ White
- Supply with stop:

CADET® 3
Flushing System