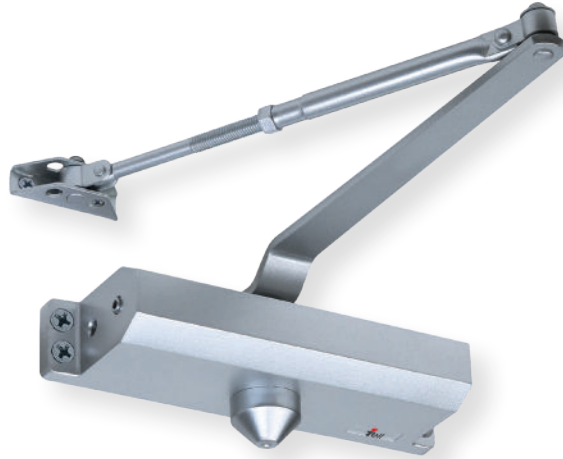


Standard-Duty Grade 3 Surface Applied

DC500 SERIES



FEATURES

- Performance**
- Complies with ANSI A156.4
 - Grade 3
 - 500,000 cycles
 - UL/ULC listed up to 3 hours fire rated

- Chassis/Closer**
- Cast aluminum

- Handing**
- Non-handed

- Mounting**
- Tri-Pack — regular, top jamb and parallel arm applications.

- Main Arm**
- Stamped steel
 - Accommodates reveals up to 3 1/4"
 - Adjustable extension arm

- Spring Power**
- Size 3 or Size 4, non-adjustable

- Backcheck**
- Adjustable
 - Hydraulic - providing cushioning and preventing uncontrolled door openings.

- Valves**
- Adjustable, independent
 - Non-critical (sweep and latch)
 - Consistent closing speeds

- Fasteners**
- Metal screws included for hollow metal and aluminum mounting applications.
 - Wood screws included for wood door mounting applications.
 - Thru-bolts optional.

- Door Range**
- Up to 180 degrees

- Door Preparation**
- 9 1/8" horizontal x 3/4" vertical
 - 4-Hole mounting location
 - Retrofits traditional closer

- Warranty**
- Lifetime limited

DC500 SERIES

OPTIONS

COVER High impact plastic
Plated kit: cover, arm & bracket

HOLD OPEN ARM Forged steel with hold open adjustable from 80 to 135 degrees

DOOR SIZING

Regular/Top Jamb Installation

CLOSER	DOOR TYPE	DOOR WIDTH				
		2' min	2.5' max	3' max	3.5' max	4' max
540	Interior	N/A	N/A	✓	✓	✓
	Exterior	N/A	N/A	✓	♿	♿
541	Interior	✓	✓	♿	♿	N/A
	Exterior	✓	✓	♿	N/A	N/A
543 - 546	Interior	N/A	N/A	543	544	545
	Exterior	N/A	543	544	545	546

Parallel Arm Installation

CLOSER	DOOR TYPE	DOOR WIDTH				
		2' min	2.5' max	3' max	3.5' max	4' max
540	Interior		✓	✓	✓	✓
	Exterior		✓	♿	♿	N/A
541	Interior		✓	♿	N/A	N/A
	Exterior		✓	N/A	N/A	N/A
543 - 546	Interior		543	544	545	546
	Exterior		544	545	546	N/A

✓ = Recommended

N/A = Not applicable or recommended

♿ = Opening force 5 lbs. on interior and 8.5 lbs. on exterior