

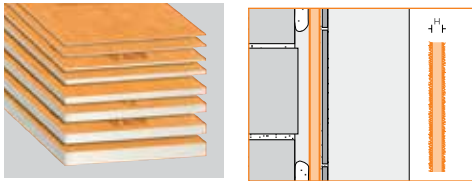
# SCHLUTER®-KERDI-BOARD



## SUBSTRATE

SUBSTRATE, BUILDING PANEL, BONDED WATERPROOFING

### Application and Function



#### 12.1 Schluter®-KERDI-BOARD

**12.1 Schluter®-KERDI-BOARD** is a multifunctional tile substrate and building panel, which can also be used for creating bonded waterproofing assemblies with tile coverings.

It consists of an extruded polystyrene foam panel, with a special reinforcement material on both sides and fleece webbing for effective anchoring in thin-set mortar.

With the available panel thicknesses of 3/16", 3/8", 1/2", 5/8", 3/4", 1", 1-1/2", and 2" (5, 9, 12.5, 15, 19, 25, 38, and 50 mm), KERDI-BOARD covers a broad range of application areas for creating flat, level, plumb, square, and dimensionally stable substrates for the installation of ceramic and natural stone tiles. With suitable preparation of the abutting seams and joint areas, the panel may be used for bonded waterproofing assemblies.

KERDI-BOARD is suitable for interior uses such as: creating tile substrates on masonry walls, wood or metal framing, and other finished wall surfaces; creating straight or curved partition walls; creating straight or curved bathtub and shower surrounds; concealing pipes and columns; as well as creating bathtub platforms, vanities, storage shelves, countertops, and various other bathroom structures. KERDI-BOARD is not intended for exterior applications.

The boards are simply cut to size with a utility knife. The gridlines, which are printed on the surface, are helpful for neat and quick cuts and installation.

KERDI-BOARD can be fully adhered or spot-bonded in existing or masonry wall areas with



thin-set mortar. If necessary, the material may be secured with additional wall anchors. In the case of stud framing, KERDI-BOARD is attached with screws and washers from the matching hardware system.

Tiles can be installed directly over KERDI-BOARD using the thin-set method.

L-shaped and U-shaped KERDI-BOARD panels are available for creating pipe and column coverings, and grooved panels are available for creating curved elements. Schluter-Systems also offers profiles and attachment hardware for wall connections and finishing edges, as well as matching wall anchors and screws.

**12.1 Schluter®-KERDI-BOARD-SB/-SC** are prefabricated substrates, made of KERDI-BOARD, which integrate with the Schluter-Shower System. The substrates are waterproof and ready for tile, leaving only sealing of joints and corners to complete waterproofing. The KERDI-BOARD-SB shower bench is available in triangular and rectangular configurations in

the followings sizes (width x depth x height). The triangular benches are 16" x 16" x 20" (41 x 41 x 51 cm) and 24" x 24" x 20" (61 x 61 x 51 cm). Rectangular benches are 38" x 16" x 20" (97 x 41 x 51 cm) and 48" x 11-1/2" x 20" (122 x 29 x 51 cm). The KERDI-BOARD-SC shower curb can be used in conjunction with any shower base. Curb dimensions are 38" x 6" x 4-1/2" (97 x 15 x 11.5 cm) and 48" x 6" x 4-1/2" (122 x 15 x 11.5 cm).

**Schluter®-KERDI-BOARD-SN** is a prefabricated shower niche made of KERDI-BOARD that can be installed in both KERDI and KERDI-BOARD wall assemblies. The shower niche features a 1/2" (12.5 mm) -thick by 2" (50 mm) -wide integrated bonding flange and is available in 12" x 6" (30 cm x 15 cm), 12" x 12" (30 cm x 30 cm), 12" x 20" (30 cm x 51 cm), and 12" x 28" (30 cm or 71 cm) sizes.

**Schluter®-KERDI-BOARD-KIT** combines all of the necessary components to waterproof the walls of your bathtub and acrylic shower base using waterproof building panels. The kit includes 1/2" x 48" x 38" (1.25 cm x 122 cm x 97 cm) KERDI-BOARD waterproofing panels, KERDI-BAND, pipe and mixing valve seals, screws and washers, plus 290 ml of KERDI-FIX sealant in bright white. The KERDI-BOARD-KIT provides enough KERDI-BOARD to cover up to 101 ft<sup>2</sup> (9.4 m<sup>2</sup>) of wall area.

## Material Properties and Areas of Application

KERDI-BOARD is made from extruded polystyrene foam, with a cement-free reinforcement layer laminated to both sides and an anchoring fleece webbing. The surface of the board has gridlines consisting of 3/8" x 3/8" (10 mm x 10 mm) squares printed on one side.

KERDI-BOARD is waterproof and vapor-retardant and can withstand all chemical stresses that typically occur in conjunction with ceramic tile coverings. KERDI-BOARD may be used in bonded waterproofing assemblies where required.

KERDI-BOARD is completely flat and will not warp, even with one-sided exposure to temperature and moisture fluctuations. It will not rot or decay.

KERDI-BOARD can be used in a multitude of interior applications. KERDI-BOARD is not intended for exterior applications. See the Limitations section for application clarifications. In special cases, the suitability of the material must be verified based on the anticipated chemical and mechanical stresses. The information provided below is intended as general guidelines.

Structures on which KERDI-BOARD is to be installed must be stable and meet any other project-specific requirements.

Select a suitable material thickness if using KERDI-BOARD for the construction of free-standing partition walls, shelving, or similar structures, and use reinforcement profiles as necessary. Arrange supports made of KERDI-BOARD at regular intervals consistent with conventional building practices.

Select the material thickness and installation method depending on the evenness of the substrate. KERDI-BOARD can be spot-bonded to walls to correct substrate variations or fully embedded in thin-set mortar where walls are sufficiently even and plumb.

KERDI-BOARD should be stored flat. In case of outdoor storage, protect the material from direct sunlight and weather exposure.

## 12.1 Schluter®-KERDI-BOARD

Property	Method	Value
Water vapor permeance	ASTM E96 <sup>1</sup>	0.36 perms - 1/2" (12.5 mm)
Thermal resistance (R-value)	ASTM C518	R 9.1 - 2" (50 mm) R 2.2 - 1/2" (12.5 mm) R 0.9 - 3/16" (5 mm)
Service temperature range		-58°F to 158°F (-50°C to 70°C)
Flame spread/smoke developed	ASTM E84 CAN/ULC S102.2	Pass <sup>2</sup> Pass <sup>3</sup>
Thermal barrier evaluation	NFPA 286	Pass <sup>2,4</sup>

<sup>1</sup> Using the desiccant method at 100°F (38°C) and 90% RH

<sup>2</sup> Per International Building Code Requirements, contact Schluter®-Systems for more information

<sup>3</sup> Specific building categories, contact Schluter®-Systems for more information

<sup>4</sup> Porcelain tile used as thermal barrier over 1/2" (12.5 mm) -thick KERDI-BOARD on wood framing

## Installation

### Fully embedded KERDI-BOARD

Any board thickness suitable

1. Remove all surface contaminants from the substrate that may weaken the bond.
2. Apply thin-set mortar to the substrate and/or onto KERDI-BOARD with a notched trowel. The mortar must bond to the substrate and mechanically anchor the fleece on the KERDI-BOARD surface.
3. Apply the panels to the wall and firmly press them in place to ensure full coverage.
4. Tightly abut the individual panels and align them appropriately.
5. The tiles can be installed immediately using SET, ALL-SET, FAST-SET or unmodified thin-set mortar. Choose a notched trowel to match the tile format, and back-butter the tiles, if necessary, to attain full coverage.

**Note:** If the bond between the thin-set mortar and substrate is questionable, additional mechanical attachment with the KERDI-BOARD-ZSD anchors or KERDI-BOARD-ZT washers and corresponding screws is required. Fasteners are installed after the thin-set mortar has hardened.

**Note:** See section "Waterproofing" on the use of KERDI-BOARD in bonded waterproofing assemblies.

### Spot-bonded KERDI-BOARD

Minimum board thickness = 3/8" (9 mm)

1. Remove all surface contaminants from the substrate that may weaken the bond.
2. Place spots of thin-set mortar on the KERDI-BOARD panel or substrate in intervals of approx. 12" (30 cm). The mortar must bond to the substrate and mechanically anchor the fleece on the KERDI-BOARD surface.

3. Apply the panels to the wall, firmly press them in place, and align them with a straight-edge or level.
4. The tiles can be installed immediately using SET, ALL-SET, FAST-SET or unmodified thin-set mortar. Choose a notched trowel to match the tile format, and back-butter the tiles, if necessary, to attain full coverage.

**Note:** If the bond between the thin-set mortar and substrate is questionable, additional mechanical attachment with the KERDI-BOARD-ZSD anchors or KERDI-BOARD-ZT washers and corresponding screws is required. Fastener locations must coincide with mortar spots. This may be ensured by making holes in the KERDI-BOARD at the desired fastener locations prior to applying mortar spots. Fasteners are installed after the thin-set mortar has hardened.

**Note:** See section "Waterproofing" on the use of KERDI-BOARD in bonded waterproofing assemblies.

### Use of KERDI-BOARD on wood or metal framing

Minimum board thickness = 1/2" (12.5 mm) for studs spaced at 16" (40.6 cm) o.c.; 3/4" (19 mm) for studs spaced at 24" (61.0 cm) o.c.

1. KERDI-BOARD can be mounted vertically or horizontally on wood or metal framing with appropriate screws (i.e., coarse thread wood screw for wood studs and self-tapping for metal studs) and corresponding KERDI-BOARD-ZT washers.
2. The selected screws must be of sufficient length to reach a depth of at least 3/4" (20 mm) in wood studs and at least 3/8" (10 mm) in metal studs. The maximum allowable on-center fastener spacing is 12" (30 cm) for walls and 6" (15 cm) for ceilings. Screws may be placed between

adjacent panels such that the washers fasten both panel edges.

- The tiles can be installed immediately using SET, ALL-SET, FAST-SET or unmodified thin-set mortar. Choose a notched trowel to match the tile format, and back-butter the tiles, if necessary, to attain full coverage.

**Note:** See section “Waterproofing” on the use of KERDI-BOARD in bonded waterproofing assemblies.

### Use of KERDI-BOARD in non-bearing partition wall systems

Minimum board thickness = 2" (50 mm)

- KERDI-BOARD is adhered to the permanent wall in such a way as to provide lateral stability. This can be achieved by sandwiching the panel between adjacent KERDI-BOARD panels, fixed building elements, etc. As an alternative, the KERDI-BOARD-ZW angle profile or KERDI-BOARD-ZB U-shaped profile may be screw-mounted to the wall prior to partition installation.
- Open-ended partition walls can be further stabilized with the corresponding KERDI-BOARD-ZA/-ZB U-shaped profiles. If you plan to screw finishing hardware (e.g., shower door hinges) to the U-shaped profile, adhere the matching KERDI-BOARD-ZFP flat plastic profile to the back of the U-shaped profile to improve the fastening of the screws. U-shaped profiles may also be used for connections in the floor and ceiling areas.
- If multiple KERDI-BOARD panels are required to create the desired partition, the panels must be arranged horizontally with the joints sealed using thin-set mortar or KERDI-FIX adhesive. The KERDI-BOARD-ZW angle profile or KERDI-BOARD-ZB U-shaped profile may be included in the joints for improved stability.
- Such partition walls are not to be considered load-bearing structural walls. As a rule, use the 2" (50 mm) panels for these elements. Panels from a thickness of 3/4" (19 mm) may be used for building shelving. Again, this must be evaluated in accordance with the building specifications.
- The tiles can be installed using SET, ALL-SET, FAST-SET or unmodified thin-set mortar once the bonding materials used to construct the partition have cured sufficiently to stabilize the assembly. Choose a notched trowel to match the tile format, and back-butter the tiles, if necessary, to attain full coverage.

**Note:** See section “Waterproofing” on the use of KERDI-BOARD in bonded waterproofing assemblies.

### Countertops made of KERDI-BOARD

Minimum board thickness = 1-1/2" (38 mm)

- KERDI-BOARD is adhered directly to base cabinets using the KERDI-FIX adhesive. All joints of KERDI-BOARD panels must be sealed with KERDI-FIX or thin-set mortar.
- The backsplash may consist of KERDI-BOARD or other appropriate tile substrate. Seal the countertop/backsplash transition with KERDI-BAND using SET, ALL-SET, FAST-SET or unmodified thin-set mortar.
- Countertop edges may be finished with the KERDI-BOARD-ZC brushed stainless steel U-profile and corresponding QUADEC or RONDEC, RONDEC-CT, or RONDEC-STEP profiles.
  - Apply KERDI-FIX to the inside vertical surface of the KERDI-BOARD-ZC profile and slide the profile over the edge of the KERDI-BOARD, pushing it tightly against the panel. The corresponding QUADEC or RONDEC profiles are installed with SET, ALL-SET, FAST-SET or unmodified thin-set mortar in conjunction with the tile.
  - RONDEC-CT and RONDEC-STEP profiles are installed with SET, ALL-SET, FAST-SET or unmodified thin-set mortar in conjunction with the tile.
- The countertop/backsplash transition may be finished with one of the DILEX cove-shaped profiles. Various materials and finishes are available to match the sink rail profiles above.
- Sinks may be mounted on top of the tile or tiled-under using RONDEC or QUADEC profiles and corresponding sink corners.
- The tiles can be installed immediately using SET, ALL-SET, FAST-SET or unmodified thin-set mortar. Choose a notched trowel to match the tile format, and back-butter the tiles, if necessary, to attain full coverage.

**Note:** Please refer to the Walls and Countertops Profiles data sheet for additional information on profiles, including installation instructions.

A bearing plate must be provided for fastening fixtures (e.g., faucet, soap dispenser, etc.) in tiled-under sink applications to distribute the pressure of the fixture hardware on the underside of the assembly. This may be performed by routing a section from the top of the KERDI-BOARD in the area where the fixtures are to be placed. Apply

a corresponding piece of ceramic tile with thin-set mortar in the resulting space flush with the surface of the KERDI-BOARD. In general, it is recommended that the tile be at least 5/16" (8 mm) -thick and extend approximately 1-1/2" (38 mm) beyond the fixture hardware on all sides. Once the countertop is tiled and grouted, holes may be drilled through the assembly to fit the fixture-mounting studs. Additional material may be removed from the underside of the KERDI-BOARD to allow installation of the fixture hardware.

### Pipe and column coverings made of KERDI-BOARD

- The KERDI-BOARD-E/-U L-shaped and U-shaped panels allow for quick and easy covering of pipes and columns.
- The panels feature V-shaped grooves. They are supplied flat, which makes them easy to cut to the required size.
- Apply thin-set mortar, KERDI-FIX adhesive, or the KERDI-BOARD-ZDK double-sided adhesive tape to the V-shaped grooves. Fold the panels prior to installation.
- Adhere the edges of the L-shaped or U-shaped panels to the existing walls using either thin-set mortar or KERDI-FIX. If required, mount the KERDI-BOARD-ZW angle profile on the wall area first for reinforcement.
- The tiles can be installed immediately using SET, ALL-SET, FAST-SET or unmodified thin-set mortar. Choose a notched trowel to match the tile format, and back-butter the tiles, if necessary, to attain full coverage.

**Note:** As an alternative, you can also cut a single U-shaped panel into two L-shaped panels with shorter legs.

**Note:** See section “Waterproofing” on the use of KERDI-BOARD in bonded waterproofing assemblies.

### Curved wall areas made of KERDI-BOARD

- The KERDI-BOARD-V panels feature grooves to allow for quick and easy creation of curved elements.
- First, cut the panels to the required size. If a larger expanse of panels is required, several panels can be connected along the edges with thin-set mortar, KERDI-FIX adhesive, or the KERDI-BOARD-ZDK double-sided adhesive tape.
- If the grooved surface points toward the inside, it is recommended that the

grooves be filled with thin-set mortar prior to panel installation.

4. Outward-facing grooves should be filled with thin-set mortar prior to or during the tile installation.
5. The tiles can be installed using SET, ALL-SET, FAST-SET or unmodified thin-set mortar once the bonding materials used to construct the element have cured sufficiently to stabilize the assembly. Choose a notched trowel to match the tile format, and back-butter the tiles, if necessary, to attain full coverage

**Note:** See section "Waterproofing" on the use of KERDI-BOARD in bonded waterproofing assemblies.

### KERDI-BOARD-SB bench

1. Apply SET, ALL-SET, FAST-SET or unmodified thin-set mortar to the floor and walls using a 1/4" x 3/8" (6 mm x 10 mm) square- or U-notched trowel.
2. Press the bench firmly into place and check the underside and backsides to ensure that full coverage and support are achieved. Verify that the slope on the surface of the bench is directed toward the shower base.
3. Install KERDI-BAND and KERDI-KERECK and KERDI-KERS-B (for triangular bench) to cover all seams and corners, ensuring a minimum 2" (50 mm) overlap, and work the membrane into the mortar to achieve full coverage and remove air pockets.

### KERDI-BOARD-SC curb

1. Apply SET, ALL-SET, FAST-SET or unmodified thin-set mortar to the floor and to the edge of the shower base and walls using a 1/4" x 3/8" (6 mm x 10 mm) square- or U-notched trowel.
2. Press the curb or ramp firmly into place. Check the underside of the curb or ramp to ensure that full coverage and support is achieved.
3. Seal the curb to the base and walls using KERDI-KERECK and KERDI-BAND.

### KERDI-BOARD-SN shower niche

1. Determine desired location and trace around the outside of the KERDI-BOARD-SN flange, making sure the lines are level and plumb. Cut and remove the wallboard such that the niche will be supported on both sides by the studs or other wall framing.
2. Insert the niche and fasten to the studs. When installing adjacent to KERDI-

BOARD, use wood or metal screws and KERDI-BOARD-ZT washers, placing the fasteners along the seam between the KERDI-BOARD and the niche. When installing adjacent to gypsum board or other tile backers (e.g., CBU), use wood or metal screws only (i.e., no washers), placing fasteners approximately 1/4" (6 mm) from the edges of the niche. Fasten all corners and limit fastener spacing to 12" (305 mm) o.c.

3. Connections between the niche and walls are made using KERDI-BAND or KERDI. When installed adjacent to KERDI-BOARD, seams are most easily constructed using KERDI-BAND. When installed adjacent to gypsum board or other tile backers (e.g., CBU), seams are most easily constructed by continuous application of the KERDI membrane. The membrane is applied up to the niche opening. Once the niche is sealed to the wall assembly, tile can be installed immediately using SET, ALL-SET, FAST-SET or unmodified thin-set mortar.
4. When using the prefabricated shelf, determine the desired height of the shelf and mark with a level line. Set tile using SET, ALL-SET, FAST-SET or unmodified thin-set mortar up to that line on the back and sides of the niche. Butter the sides and back of the shelf with SET, ALL-SET, FAST-SET or unmodified thin-set mortar and solidly embed it in the niche, resting on the previously installed tile. The shelf may be raised at the back to create a slope, or the tile may be set on a slope during installation, to prevent water from pooling in the finished application. Continue setting tile using SET, ALL-SET, FAST-SET or unmodified thin-set mortar.

### KERDI-BOARD-KIT

1. KERDI-BOARD can be mounted vertically or horizontally on framing with appropriate screws (e.g., KERDI-BOARD-ZS coarse thread screws for wood studs [included] and corresponding KERDI-BOARD-ZT washers [included].) If applying over metal studs, use self-tapping screws. Minimum board thickness = 1/2" (12.5 mm) for studs spaced at 16" (40.6 cm) o.c.; 3/4" (19 mm) for studs spaced at 24" (61.0 cm) o.c.. Screws must reach a depth of at least 3/4" (20 mm) in wood studs. For metal studs, screws must reach a depth of at least 3/8" (10 mm).
2. Leave a 1/4" (6 mm)-gap between the bottom edge of KERDI-BOARD and the top of the tub or acrylic shower pan. The back of the KERDI-BOARD can be routed to cover the tub/pan flange.

3. The vertical edges of each panel should be positioned over the center of a stud or other solid backing. If necessary, KERDI-BOARD panels can be cut easily with a utility knife and straight edge. Screws may be placed between adjacent panels such that the washers fasten both panel edges. The maximum allowable on-center fastener spacing is 12" (30 cm) for walls and 6" (15 cm) for ceilings.

4. Place painter's tape at inside corners of the tub deck or shower base for protection.

Apply a minimum of 5" (125 mm) of Schluter SET™, Schluter ALL-SET™, Schluter FAST-SET™, or unmodified thin-set mortar to the KERDI-BOARD using the KERDI-TROWEL or a 1/4" x 3/16" (6 mm x 5 mm) V-notched trowel. Use KERDI-FIX to completely fill the 1/4" (6 mm)-wide gap between the KERDI-BOARD and tub.

**Note:** When KERDI-BOARD is installed above the tub flange, apply KERDI-FIX to the tub flange and spread using a small-notched trowel.

5. Apply KERDI-BAND waterproofing strips. Solidly embed the membrane in the mortar and KERDI-FIX to ensure full coverage and remove air pockets.
6. KERDI-BOARD joints, corners, and fastener penetrations are sealed with KERDI-BAND, ensuring a minimum 2" (50 mm) overlap. Any protrusions through the panel (e.g., mixing valve, shower head, etc.) must be sealed with KERDI-SEAL-PS/-MV, or KERDI-FIX.

### Waterproofing with KERDI-BOARD

Where waterproofing is desired, the joints and corners of KERDI-BOARD in the area must be sealed with KERDI-BAND using SET, ALL-SET, FAST-SET or unmodified thin-set mortar. The KERDI-BAND must overlap panel joints by at least 2" (50 mm).

KERDI-BAND is also suitable for sealing connections to fixed building elements such as door and window frames. Where these surfaces will not accept a bond to SET, ALL-SET, FAST-SET or unmodified thin-set mortar, use KERDI-FIX to bond KERDI-BAND.

Separate KERDI-BOARD above the existing movement joints and structural joints and cover the joints with KERDI-FLEX using SET, ALL-SET, FAST-SET or unmodified thin-set mortar, ensuring a minimum 2" (50 mm) overlap.

Fastener penetrations may be sealed with KERDI-BAND using SET, ALL-SET, FAST-SET or unmodified thin-set mortar. Please refer to the Schluter-Shower System Installation Handbook for guidelines on waterproofing showers, steam showers, and tub surrounds.

**Limitations**

- KERDI-BOARD not for use in exterior applications.
- Certain glass tiles may not be compatible with bonded waterproofing applications and/ or may require special setting materials. Consult glass tile manufacturer and Schluter- Systems for more information.

- Certain moisture-sensitive stones, e.g., green marble, or resin-backed tiles may not be appropriate for use in wet areas or may require special setting materials. Consult stone supplier and Schluter-Systems for more information.

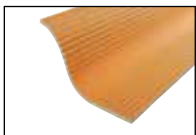
**Note:** If installing bathroom fixtures such as grab bars in showers, wall-mounted toilets, or other heavy objects, the fixtures must be anchored in the structure or solid blocking behind KERDI-BOARD.

**Note:** Reinforcement may be required behind the entire footprint of the object. For example, place solid blocking behind the base of a wall-mounted toilet installed over KERDI-BOARD on stud framing.

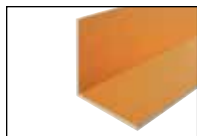
**Product Item Numbers**



Schluter®-KERDI-BOARD			Waterproof building panel
Item No.	Width	Length	Thickness
<b>Panel dimension:</b> 48" x 32" – 122 cm x 81 cm			
KB 12 1220 812	48" – 122 cm	32" – 81 cm	1/2" – 12.5 mm
<b>Panel dimension:</b> 48" x 64" – 122 cm x 162.5 cm			
KB 5 1220 1625	48" – 122 cm	64" – 162.5 cm	3/16" – 5 mm
KB 9 1220 1625	48" – 122 cm	64" – 162.5 cm	3/8" – 9 mm
KB 12 1220 1625	48" – 122 cm	64" – 162.5 cm	1/2" – 12.5 mm
<b>Panel dimension:</b> 48" x 96" – 122 cm x 244 cm			
KB 5 1220 2440	48" – 122 cm	96" – 244 cm	3/16" – 5 mm
KB 9 1220 2440	48" – 122 cm	96" – 244 cm	3/8" – 9 mm
KB 12 1220 2440	48" – 122 cm	96" – 244 cm	1/2" – 12.5 mm
KB 15 1220 2440	48" – 122 cm	96" – 244 cm	5/8" – 15 mm
<b>Panel dimension:</b> 24-1/2" x 96" – 62.5 cm x 244 cm			
KB 19 625 2440	24-1/2" – 62.5 cm	96" – 244 cm	3/4" – 19 mm
KB 25 625 2440	24-1/2" – 62.5 cm	96" – 244 cm	1" – 25 mm
KB 38 625 2440	24-1/2" – 62.5 cm	96" – 244 cm	1-1/2" – 38 mm
KB 50 625 2440	24-1/2" – 62.5 cm	96" – 244 cm	2" – 50 mm
<b>Panel dimension:</b> 48" x 120" – 122 cm x 305 cm			
KB 15 1220 3050	48" – 122 cm	120" – 305 cm	5/8" – 15 mm

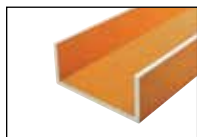


Schluter®-KERDI-BOARD-V			Waterproof building panel
Item No.	Width	Length	Thickness
KB 19 625 2440 V	24-1/2" – 62.5 cm	96" – 244 cm	3/4" – 19 mm
KB 25 625 2440 V	24-1/2" – 62.5 cm	96" – 244 cm	1" – 25 mm
KB 38 625 2440 V	24-1/2" – 62.5 cm	96" – 244 cm	1-1/2" – 38 mm
KB 50 625 2440 V	24-1/2" – 62.5 cm	96" – 244 cm	2" – 50 mm



**Schluter®-KERDI-BOARD-E** Waterproof building panel

Item No.	Width	Length	Thickness
KB 19 625 2440 E	24-1/2" – 62.5 cm	96" – 244 cm	3/4" – 19 mm
KB 25 625 2440 E	24-1/2" – 62.5 cm	96" – 244 cm	1" – 25 mm



**Schluter®-KERDI-BOARD-U** Waterproof building panel

Item No.	Width	Length	Thickness
KB 19 625 2440 U20	8-1/4" x 7-7/8" x 8-1/4" = 24-1/2" – 21 x 20 x 21 cm = 62 cm	96" – 244 cm	3/4" – 19 mm
KB 19 625 2440 U30	6-5/16" x 11-13/16" x 6-5/16" = 24-1/2" – 16 x 30 x 16 cm = 62 cm	96" – 244 cm	3/4" – 19 mm



**Schluter®-KERDI-BOARD-SN** Shower niche

Item No.	Size	Depth	Shelf
KB 12 SN 305 152 A	12" x 6" – 305 mm x 152 mm	3-1/2" – 89 mm	-
KB 12 SN 305 305 A	12" x 12" – 305 mm x 305 mm	3-1/2" – 89 mm	-
KB 12 SN 305 508 A1	12" x 20" – 305 mm x 508 mm	3-1/2" – 89 mm	1
KB 12 SN 305 711 A1	12" x 28" – 305 mm x 711 mm	3-1/2" – 89 mm	1



**12.1 Schluter®-KERDI-BOARD-SC** Prefabricated curb

Item No.	Width	Length	Height
KBSC 115 150 970	4-1/2" – 11.5 cm	48" – 122 cm	6" - 15 cm
KBSC 115 150 1220	4-1/2" – 11.5 cm	38" – 97 cm	6" - 15 cm



**12.1 Schluter®-KERDI-BOARD-SB** Prefabricated bench

Item No.	Width	Length	Height	Shape
KBSB 410 TA	16" – 41 cm	16" – 41 cm	20" - 51 cm	Triangular
KBSB 610 TA	24" – 61 cm	24" – 61 cm	20" - 51 cm	Triangular
KBSB 290 970 RA	38" – 97 cm	11-1/2" – 29 cm	20" - 51 cm	Rectangular
KBSB 410 1220 RA	48" – 122 cm	16" – 41 cm	20" - 51 cm	Rectangular



**Schluter®-KERDI-BOARD-KIT**

Includes	Description	Quantity
1 KERDI-BOARD	Waterproofing building panel 1/2" x 48" x 38" (1.25 cm x 122 cm x 97 cm) = 101 ft <sup>2</sup> (9.4 m <sup>2</sup> )	8
2 KERDI-BAND	Waterproofing strip 5" x 98' 5" (125 mm x 30 m)	1
3 KERDI-SEAL-PS	Pipe seal 1/2" (12.5 mm), 3/4" (20 mm)	2
4 KERDI-SEAL-MV	Mixing valve seal 4-1/2" (114 mm)	1
5 KERDI-BOARD-ZT/-ZS	Screws and washers	140
6 KERDI-FIX	Sealant 9.8 oz (290 ml)	2



Schluter®-KERDI-BOARD-ZW	
Item No.	Description
<b>Length supplied: 6" – 15 cm</b>	
KB ZW 30 E/15	Stainless steel angle profile
<b>Length supplied: 8' 2-1/2" – 2.50 m</b>	
KB ZW 30 E	Stainless steel angle profile



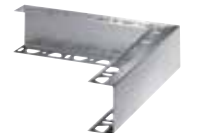
Schluter®-KERDI-BOARD-ZC		
Item No.	Description	Size
<b>Length supplied: 8' 2-1/2" – 2.50 m</b>		
KB ZC 38 EB	U-shaped brushed stainless steel profile with 1 perforated anchoring leg	1-1/2" – 38 mm
KB ZC 50 EB	U-shaped brushed stainless steel profile with 1 perforated anchoring leg	2" – 50 mm



Schluter®-KERDI-BOARD-ZC/E		
Item No.	Description	Size
E/KB ZC 38 EB	Brushed stainless steel outside corner piece for ZC	1-1/2" – 38 mm
E/KB ZC 50 EB	Brushed stainless steel outside corner piece for ZC	2" – 50 mm



Schluter®-KERDI-BOARD-ZA		
Item No.	Description	Size
<b>Length supplied: 8' 2-1/2" – 2.50 m</b>		
KB ZA 19 EB	U-shaped brushed stainless steel profile with 2 perforated anchoring legs	3/4" – 19 mm
KB ZA 25 EB	U-shaped brushed stainless steel profile with 2 perforated anchoring legs	1" – 25 mm
KB ZA 38 EB	U-shaped brushed stainless steel profile with 2 perforated anchoring legs	1-1/2" – 38 mm
KB ZA 50 EB	U-shaped brushed stainless steel profile with 2 perforated anchoring legs	2" – 50 mm



Schluter®-KERDI-BOARD-ZA/E		
Item No.	Description	Size
E/KB ZA 38 EB	Brushed stainless steel outside corner piece for ZA	1-1/2" – 38 mm
E/KB ZA 50 EB	Brushed stainless steel outside corner piece for ZA	2" – 50 mm



Schluter®-KERDI-BOARD-Z/V		
Item No.	Description	Size
<b>Length supplied: 8' 2-1/2" – 2.50 m</b>		
V/KB Z 19 EB	Brushed stainless steel connector for ZC and ZA	3/4" – 19 mm
V/KB Z 25 EB	Brushed stainless steel connector for ZC and ZA	1" – 25 mm
V/KB Z 38 EB	Brushed stainless steel connector for ZC and ZA	1-1/2" – 38 mm
V/KB Z 50 EB	Brushed stainless steel connector for ZC and ZA	2" – 50 mm



Schluter®-KERDI-BOARD-ZI/V		
Item No.	Description	Size
V/KB ZI 19 E	Stainless steel internal connector for ZC or ZA	3/4" – 19 mm
V/KB ZI 25 E	Stainless steel internal connector for ZC or ZA	1" – 25 mm
V/KB ZI 38 E	Stainless steel internal connector for ZC or ZA	1-1/2" – 38 mm
V/KB ZI 50 E	Stainless steel internal connector for ZC or ZA	2" – 50 mm



Schluter®-KERDI-BOARD-ZB		
Item No.	Description	Size
<b>Length supplied: 8' 2-1/2" – 2.50 m</b>		
KB ZB 19 E	U-shaped stainless steel profile with 3 perforated anchoring legs	3/4" – 19 mm
KB ZB 25 E	U-shaped stainless steel profile with 3 perforated anchoring legs	1" – 25 mm
KB ZB 38 E	U-shaped stainless steel profile with 3 perforated anchoring legs	1-1/2" – 38 mm
KB ZB 50 E	U-shaped stainless steel profile with 3 perforated anchoring legs	2" – 50 mm



**Schluter®-KERDI-BOARD-ZSD**

Item No.	Description	Length	Packaging
KB ZSD 90 E	Stainless steel anchor	3-1/2" – 9 cm	25 anchors/box
KB ZSD 110 E	Stainless steel anchor	4-5/16" – 11 cm	25 anchors/box
KB ZSD 90 Z	Stainless steel anchor	3-1/2" – 9 cm	25 anchors/box
KB ZSD 110 Z	Stainless steel anchor	4-5/16" – 11 cm	25 anchors/box



**Schluter®-KERDI-BOARD-ZDK**

Item No.	Description	Size
KB ZDK 12/10 M	Double-sided tape	1/2" x 33' – 12.5 mm x 10 m
KB ZDK 19/10 M	Double-sided tape	3/4" x 33' – 19 mm x 10 m
KB ZDK 30/10 M	Double-sided tape	1-3/16" x 33' – 30 mm x 10 m



**Schluter®-KERDI-BOARD-ZSA**

Item No.	Description	Size
KB ZSA 100/45M	Joint replacement tape	4" x 148' – 100 mm x 45 m



**Schluter®-KERDI-BOARD-ZFP**

Item No.	Description	Size
KB ZFP 35	Flat plastic profile	1-3/8" x 8' 2-1/2" – 35 mm x 2.5 m



**8.1 Schluter®-KERDI-BAND Waterproofing strips**

Item No.	Width	Length	Thickness
KEBA 100/125/5M	5" – 12.5 cm	16' 5" - 5 m	4 mil
KEBA 100/125/10M	5" – 12.5 cm	33' - 10 m	4 mil
KEBA 100/185/5M	7-1/4" – 18.5 cm	16' 5" - 5 m	4 mil
KEBA 100/250/5M	10" – 25 cm	16' 5" - 5 m	4 mil
KEBA 100/125	5" – 12.5 cm	98' 5" - 30 m	4 mil
KEBA 100/185	7-1/4" – 18.5 cm	98' 5" - 30 m	4 mil
KEBA 100/250	10" – 25 cm	98' 5" - 30 m	4 mil



**8.1 Schluter®-KERDI-FLEX Waterproofing strips for use above movement joints**

Item No.	Width	Length	Thickness
FLEX 125/5M	5" – 12.5 cm	16' 5" - 5 m	12 mil
FLEX 250/5M	10" – 25 cm	16' 5" - 5 m	12 mil
FLEX 125/30	5" – 12.5 cm	98' 5" - 30 m	12 mil
FLEX 250/30	10" – 25 cm	98' 5" - 30 m	12 mil



**8.1 Schluter®-KERDI-KERECK-F Pre-formed corners**

Item No.	Thickness	Package
KERECK/FI 2	4 mil	2 inside corners
KERECK/FI 10	4 mil	10 inside corners
KERECK/FA 2	4 mil	2 outside corners
KERECK/FA 10	4 mil	10 outside corners



**8.1 Schluter®-KERDI-KERS-B Preformed corner**

Item No.	Thickness	Description	Packaging
KERECK 135 FI 2	4 mil	Inside corner, 135°	2 units
KERECK 135 FI 10	4 mil	Inside corner, 135°	10 units
KERSB135 K LR	4 mil	Bench corners	1 right and 1 left
KERSB135 K 5LR	4 mil	Bench corners	5 right and 5 left
KERSB135 K	4 mil	Bench/ neo-angle corner kit	1 right and 1 left bench corner, and 2 135° inside corners





**8.1 Schluter®-KERDI-SEAL-PS** Pipe seal with over-molded rubber gasket

Item No.	Pipe nipple opening diam.	Thickness	Packaging
KMS185/12	1/2" – 12.5 mm	4 mil	1 unit
KMS185/20	3/4" – 20 mm	4 mil	1 unit
KMS10185/12	1/2" – 12.5 mm	4 mil	10 units
KMS10185/20	3/4" – 20 mm	4 mil	10 units



**8.1 Schluter®-KERDI-SEAL-MV** Mixing valve seal with over-molded rubber gasket


Item No.	Mixing valve opening diam.	Thickness	Packaging
KMSMV235/114	4-1/2" – 114 mm	4 mil	1 unit
KMSMV10235/114	4-1/2" – 114 mm	4 mil	10 units




**8.3 Schluter®-KERDI-FIX** Adhesive/sealant

Item No.	Description
KERDIFIX / <i>color</i> *	Cartridge - 9.81 oz (290 ml)
KERDIFIX 100 G	Tube - 3.38 oz (100 ml)

**\*Color Codes**

 **BW**  
Bright white

 **G**  
Grey

To complete the item number, add the *color* code (e.g., KERDIFIX / *BW*).



**Schluter®-KERDI-BOARD-ZT**

Item No.	Description	Size	Packaging
KB ZT 32 Z	Galvanized steel attachment washers	1-1/4" – 32 mm	100 washers/box
KB ZT 32 Z/L	Galvanized steel attachment washers	1-1/4" – 32 mm	1000 washers/box



**Schluter®-KERDI-BOARD-ZS**

Item No.	Description	Size	Packaging
KB ZS 35 G	Course thread screw for wood framing	1-5/8" – 41 mm	200 screws/box
KB ZS 55 G	Course thread screw for wood framing	2" – 50 mm	100 screws/box
KB ZS 75 G	Course thread screw for wood framing	3" – 75 mm	100 screws/box

**Schluter®-KERDI-BOARD-ZT/-ZS**

Item No.	Description	Size	Packaging
KBZS35GT32Z	Washer and screw set	1-5/8" – 41 mm	40 each/box

## Schluter®-KERDI-BOARD 10-Year Limited Warranty

**LIMITED WARRANTY COVERAGE:** Subject to the conditions and limitations as stated in this **Schluter®-KERDI®-BOARD 10-Year Limited Warranty** (the “**Limited Warranty**”), Schluter Systems warrants that its Schluter®-KERDI®-BOARD-SB/-SC, Schluter®-KERDI®-BOARD-SN and Schluter®-KERDI®-BOARD-KIT (the “**Products**”) will be free from manufacturing defects and will perform as described in the Schluter®-Shower System Installation Handbook and Schluter®-KERDI®-BOARD Technical Data Sheet (collectively, the “**Written Materials**”) for a period of ten (10) years from the date of purchase when installed and used in accordance with the terms and conditions of the Written Materials and industry standard guidelines that are not in conflict with the Written Materials in effect at the time of installation.

For the purposes of this Limited Warranty, “**Owner**” is defined as the original end user of the property in which the Products are installed; and “**Tile Assembly**” is defined to include the Products, non-reusable tile surfaces, and applicable setting and grouting materials.

This Limited Warranty is only applicable to installations in the United States of America and Canada. Schluter Systems is not responsible or liable under any circumstances for determining the suitability of the Products for the Owner’s intended purpose. It is the responsibility of the Owner to consult with an experienced and professional installer to ensure the suitability of the Products, subfloor/substrate and all building materials in the installation and that the Written Materials are followed properly.

**RESOLUTION:** If the Products are installed and used in accordance with the terms and conditions as described hereinabove and such Products are proven defective within the applicable warranty term, the Owner’s exclusive remedy and the sole obligation of Schluter Systems, at its election, shall be to (a) reinstall or replace the failed portion of the Tile Assembly or (b) pay an amount not to exceed the original square foot cost of the installation of the Tile Assembly verified to be defective. Due to conditions beyond the control of Schluter Systems (e.g., color and shade availability, discontinuation, normal wear and tear), Schluter Systems cannot guarantee or warrant an exact match to the specific tile, stone, or other tiling materials used in the original installation. In such event, substantially similar materials may be substituted.

**EXCLUSIONS FROM COVERAGE:** This Limited Warranty excludes and in no event shall Schluter Systems have any liability for any indirect, special, incidental, punitive, exemplary, or consequential damages, including lost profits, arising out of or otherwise connected to the failure of the Products or Tile Assembly, regardless of any strict liability or active or passive negligence of Schluter Systems, and regardless of legal theory, whether in contract, tort, extra-contractual or other. This Limited Warranty further excludes any loss or damage arising out of or otherwise connected to: acts of war, terrorism, fire, explosion, natural disaster, acts of God, any failure to comply with the Written Materials, inadequate subfloor/substrate, improper preparation or other failure of subfloor/substrate, faulty or negligent penetration of the Products or subfloor/substrate, intentional acts of destruction, structural failure, misuse of or failure to maintain the Products, normal wear and tear, scratches, dents, corrosion or discoloration (whether caused by excessive heat, chemical cleaning products, abrasive agents or otherwise), efflorescence and shading which are a natural occurrence with cementitious materials and are not considered a defective condition for the purposes of this Limited Warranty, variations of texture, color or shade from those on product samples, packaging materials or other marketing materials, or other causes unrelated to the Products (e.g. tile covering failure, excess point loading, overvoltage). This Limited Warranty excludes exterior applications and applications utilizing glass tile or other non-approved tile coverings, unless specifically approved in writing on a case by case basis by the Schluter Systems Technical Services Director.

This Limited Warranty is conditioned and will be considered null and void and Schluter Systems will have the right to refuse any claims if: (a) the Products have been improperly stored or installed, or (b) the Products are subject to abusive or abnormal use, lack of maintenance, or used in a manner other than that for which the Products were designed or in any way contrary to the Written Materials.

**DISCLAIMER:** There are no warranties beyond this expressed warranty as stated herein. To the extent permitted by law, all other warranties, representations or conditions, expressed or implied, are hereby disclaimed and excluded, including but not limited to the implied warranties of **MERCHANTABILITY** or **FITNESS FOR A PARTICULAR PURPOSE** (as limited to such purposes as described in the Written Materials) or arising from a course of dealing, usage of trade or otherwise by law. ANY IMPLIED WARRANTIES ARISING BY OPERATION OF LAW ARE LIMITED IN DURATION TO THE TERM OF THIS LIMITED WARRANTY. NO REPRESENTATION, PROMISE, AFFIRMATION OR STATEMENT BY ANY EMPLOYEE OR AGENT OF SCHLUTER SYSTEMS WILL BE ENFORCEABLE AGAINST SCHLUTER SYSTEMS UNLESS IT IS SPECIFICALLY INCLUDED IN THIS LIMITED WARRANTY OR AUTHORIZED IN WRITING BY THE SCHLUTER SYSTEMS TECHNICAL SERVICES DIRECTOR. This Limited Warranty is given in lieu of any other warranty, whether expressed or implied. The remedies contained herein are the only remedies available for breach of this Limited Warranty. This Limited Warranty extends only to the Owner and is not transferable or assignable unless authorized by written agreement and signed by the Schluter Systems Technical Services Director or otherwise prohibited by specific state or provincial law. This Limited Warranty gives you specific legal rights; some states and provinces do not allow disclaimers or other restrictions of implied warranties; some of the above disclaimers may not apply to you. **No changes or modifications of any terms or conditions of this Limited Warranty are permitted unless duly authorized in writing by the Schluter Systems Technical Services Director.** This Limited Warranty shall supersede and replace any and all prior oral or written warranties, agreements, or other representations made by or on behalf of Schluter Systems relative to the Products or the application of the Products and shall apply to any installation occurring on or after March 19, 2021. If the Schluter®-KERDI®-BOARD is used in conjunction with other Schluter products, a different Schluter warranty may apply. For the most current information and materials regarding Schluter Systems warranties and programs, please visit [https://www.schluter.com/schluter-us/en\\_US/downloadfiles](https://www.schluter.com/schluter-us/en_US/downloadfiles).

**MAKING A CLAIM:** To make a claim under this Limited Warranty, the Owner must provide Schluter Systems<sup>2</sup> with written notice within thirty (30) days of any alleged defect in the Products covered by this Limited Warranty, together with date and proof of purchase of such Products and/or all of its components and name and address of all installers and all invoices related to the original installation, failing which this Limited Warranty shall have no legal effect<sup>3</sup>. Schluter Systems reserves the right at its election and as a condition of this Limited Warranty to inspect the alleged failed and/or defective Products.

All U.S. Claims shall be sent to:  
Schluter Systems L.P.  
Attn: Warranty Claims Dept.  
194 Pleasant Ridge Road  
Plattsburgh, NY 12901-5841

All Canadian Claims shall be sent to:  
Schluter Systems (Canada), Inc.  
Attn: Warranty Claims Dept.  
21100 chemin Ste-Marie  
Ste-Anne-de-Bellevue, QC H9X 3Y8

<sup>1</sup> If there are any conflicting terms between any Written Materials, the most recently updated document shall be deemed to control.

<sup>2</sup> This Limited Warranty is limited to sales of the Products made in and intended for use in the United States and Canada. For the purposes of this Limited Warranty, Schluter Systems L.P. shall offer warranty coverage to Owners located in the United States, and Schluter Systems (Canada) Inc. shall offer warranty coverage to Owners located in Canada.

<sup>3</sup> In the event that Owner fails to provide such required invoices relating to the original installation, Schluter Systems shall pay Owner an amount equal to the average, reasonable costs of a comparable installation. If the parties fail to agree on such amount, such dispute shall promptly, and in the first instance, be submitted: (a) if a U.S. claim, to arbitration in Clinton County, New York, in accordance with the rules of the American Arbitration Association, or (b) if a Canadian claim, in the Province of Quebec, Canada, in accordance with the ADRIC Arbitration Rules. Any outcome of such arbitration proceeding shall be final and binding upon the parties hereto.

## Schluter®-KERDI-BOARD Profiles 5-Year Limited Warranty

**LIMITED WARRANTY COVERAGE:** Subject to the conditions and limitations as stated in this **Schluter® Systems KERDI®-BOARD Profiles 5-Year Limited Warranty** (the “**Limited Warranty**”), Schluter Systems warrants that its Schluter®-KERDI®-BOARD-ZW, Schluter®-KERDI®-BOARD-ZC, Schluter®-KERDI®-BOARD-ZC/E, Schluter®-KERDI®-BOARD-ZA, Schluter®-KERDI®-BOARD-ZA/E, Schluter®-KERDI®-BOARD-Z/V, Schluter®-KERDI®-BOARD-ZI/V, and Schluter®-KERDI®-BOARD-ZB (collectively, the “**Products**”) will be free from manufacturing defects and will perform as described in the Schluter®-KERDI®-BOARD Technical Data Sheet (collectively, the “**Written Materials**”) for a period of five (5) years from the date of purchase when installed and used in accordance with the terms and conditions of the Written Materials and industry standard guidelines that are not in conflict with the Written Materials in effect at the time of installation.

For the purposes of this Limited Warranty, “**Owner**” is defined as the original end user of the property in which the Products are installed; and “**Tile Assembly**” is defined to include the Products, non-reusable tile surfaces, and applicable setting and grouting materials.

This Limited Warranty is only applicable to installations in the United States of America and Canada. Schluter Systems is not responsible or liable under any circumstances for determining the suitability of the Products for the Owner’s intended purpose. It is the responsibility of the Owner to consult with an experienced and professional installer to ensure the suitability of the Products, subfloor/substrate and all building materials in the installation and that the Written Materials are followed properly.

**RESOLUTION:** If the Products are installed and used in accordance with the terms and conditions as described hereinabove and such Products are proven defective within the applicable warranty term, the Owner’s exclusive remedy and the sole obligation of Schluter Systems, at its election, shall be to (a) reinstall or replace the failed portion of the Tile Assembly or (b) pay an amount not to exceed the original square foot cost of the installation of the Tile Assembly verified to be defective. Due to conditions beyond the control of Schluter Systems (e.g., color and shade availability, discontinuation, normal wear and tear), Schluter Systems cannot guarantee or warrant an exact match to the specific tile, stone, or other flooring materials used in the original installation. In such event, substantially similar materials may be substituted.

**EXCLUSIONS FROM COVERAGE:** This Limited Warranty excludes and in no event shall Schluter Systems have any liability for any indirect, special, incidental, punitive, exemplary, or consequential damages, including lost profits, arising out of or otherwise connected to the failure of the Products or Tile Assembly, regardless of any strict liability or active or passive negligence of Schluter Systems, and regardless of legal theory, whether in contract, tort, extra-contractual or other. This Limited Warranty further excludes any loss or damage arising out of or otherwise connected to: acts of war, terrorism, fire, explosion, natural disaster, acts of God, any failure to comply with the Written Materials, inadequate subfloor/substrate, improper preparation or other failure of subfloor/substrate, faulty or negligent penetration of the Products or subfloor/substrate, intentional acts of destruction, structural failure, misuse of or failure to maintain the Products, normal wear and tear, scratches, dents, corrosion or discoloration (whether caused by excessive heat, chemical cleaning products, abrasive agents or otherwise), efflorescence and shading which are a natural occurrence with cementitious materials and are not considered a defective condition for the purposes of this Limited Warranty, variations of texture, color or shade from those on product samples, packaging materials or other marketing materials, or other causes unrelated to the Products (e.g. tile covering failure, excess point loading, overvoltage). This Limited Warranty excludes exterior applications and applications utilizing glass tile or other non-approved tile coverings, unless specifically approved in writing on a case by case basis by the Schluter Systems Technical Services Director.

This Limited Warranty is conditioned and will be considered null and void and Schluter Systems will have the right to refuse any claims if: (a) the Products have been improperly stored or installed, or (b) the Products are subject to abusive or abnormal use, lack of maintenance, or used in a manner other than that for which the Products were designed or in any way contrary to the Written Materials.

**DISCLAIMER:** There are no warranties beyond this expressed warranty as stated herein. To the extent permitted by law, all other warranties, representations or conditions, expressed or implied, are hereby disclaimed and excluded, including but not limited to the implied warranties of **MERCHANTABILITY** or **FITNESS FOR A PARTICULAR PURPOSE** (as limited to such purposes as described in the Written Materials) or arising from a course of dealing, usage of trade or otherwise by law. ANY IMPLIED WARRANTIES ARISING BY OPERATION OF LAW ARE LIMITED IN DURATION TO THE TERM OF THIS LIMITED WARRANTY. NO REPRESENTATION, PROMISE, AFFIRMATION OR STATEMENT BY ANY EMPLOYEE OR AGENT OF SCHLUTER SYSTEMS WILL BE ENFORCEABLE AGAINST SCHLUTER SYSTEMS UNLESS IT IS SPECIFICALLY INCLUDED IN THIS LIMITED WARRANTY OR AUTHORIZED IN WRITING BY THE SCHLUTER SYSTEMS TECHNICAL SERVICES DIRECTOR. This Limited Warranty is given in lieu of any other warranty, whether expressed or implied. The remedies contained herein are the only remedies available for breach of this Limited Warranty. This Limited Warranty extends only to the Owner and is not transferable or assignable unless authorized by written agreement and signed by the Schluter Systems Technical Services Director or otherwise prohibited by specific state or provincial law. This Limited Warranty gives you specific legal rights; some states and provinces do not allow disclaimers or other restrictions of implied warranties; some of the above disclaimers may not apply to you. **No changes or modifications of any terms or conditions of this Limited Warranty are permitted unless duly authorized in writing by the Schluter Systems Technical Services Director.** This Limited Warranty shall supersede and replace any and all prior oral or written warranties, agreements, or other representations made by or on behalf of Schluter Systems relative to the Products or the application of the Products and shall apply to any installation occurring on or after March 19, 2021. If the Products are used in conjunction with other Schluter products, a different Schluter warranty may apply. For the most current information and materials regarding Schluter Systems warranties and programs, please visit [https://www.schluter.com/schluter-us/en\\_US/downloadfiles](https://www.schluter.com/schluter-us/en_US/downloadfiles).

**MAKING A CLAIM:** To make a claim under this Limited Warranty, the Owner must provide Schluter Systems<sup>2</sup> with written notice within thirty (30) days of any alleged defect in the Products covered by this Limited Warranty, together with date and proof of purchase of such Products and/or all of its components and name and address of all installers and all invoices related to the original installation, failing which this Limited Warranty shall have no legal effect<sup>3</sup>. Schluter Systems reserves the right at its election and as a condition of this Limited Warranty to inspect the alleged failed and/or defective Products.

All U.S. Claims shall be sent to:

All Canadian Claims shall be sent to:

Schluter Systems L.P.  
Attn: Warranty Claims Dept.  
194 Pleasant Ridge Road  
Plattsburgh, NY 12901-5841

Schluter Systems (Canada), Inc.  
Attn: Warranty Claims Dept.  
21100 chemin Ste-Marie  
Ste-Anne-de-Bellevue, QC H9X 3Y8

<sup>1</sup> If there are any conflicting terms between any Written Materials, the most recently updated document shall be deemed to control.

<sup>2</sup> This Limited Warranty is limited to sales of the Products made in and intended for use in the United States and Canada. For the purposes of this Limited Warranty, Schluter Systems L.P. shall offer warranty coverage to Owners located in the United States, and Schluter Systems (Canada) Inc. shall offer warranty coverage to Owners located in Canada.

<sup>3</sup> In the event that Owner fails to provide such required invoices relating to the original installation, Schluter Systems shall pay Owner an amount equal to the average, reasonable costs of a comparable installation. If the parties fail to agree on such amount, such dispute shall promptly, and in the first instance, be submitted: (a) if a U.S. claim, to arbitration in Clinton County, New York, in accordance with the rules of the American Arbitration Association, or (b) if a Canadian claim, in the Province of Quebec, Canada, in accordance with the ADRI Arbitration Rules. Any outcome of such arbitration proceeding shall be final and binding upon the parties hereto.



**Schluter Systems L.P.** • 194 Pleasant Ridge Road, Plattsburgh, NY 12901-5841 • Tel.: 800-472-4588 • Fax: 800-477-9783  
**Schluter Systems (Canada) Inc.** • 21100 chemin Ste-Marie, Ste-Anne-de-Bellevue, QC H9X 3Y8 • Tel.: 800-667-8746 • Fax: 877-667-2410

[www.schluter.com](http://www.schluter.com)

This technical data sheet is subject to change without notice. Please visit [www.schluter.com](http://www.schluter.com) for the latest version.