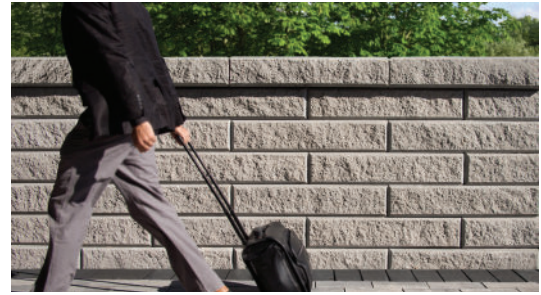


# RIDGEWALL®

LARGE SEGMENTAL RETAINING WALL SYSTEM / ENGINEERING SERVICES AVAILABLE



## UNITS



### BLOCK UNIT

39.4w x 7.68h x 17.1d in  
1000w x 195h x 435d mm



### 90° CORNER UNIT

36.9w x 7.68h x 17.1d in  
937.5w x 195h x 435d mm



### 45° CORNER UNIT

39.4w x 7.68h x 17.1d in  
1000w x 195h x 435d mm



### COPING UNIT

39.4w x 7.68h x 19.7d in  
1000w x 195h x 500d mm

## BUNDLE SPECIFICATIONS

### IMPERIAL

### METRIC

Coverage	13.23 ft <sup>2</sup>	1.2 m <sup>2</sup>
Lineal Coverage	19.68 ft	6 m
Weight	2370 lbs	1075.2 kg
Units	6	-
Coverage per unit	2.1 ft <sup>2</sup>	0.2 m <sup>2</sup>
Lineal coverage per unit	3.28 ft	1 m

Coverage	17.22 ft <sup>2</sup>	1.62 m <sup>2</sup>
Lineal Coverage	26.97 ft	8.24 m
Weight	2340 lbs	1061.4 kg
Units	6	-
Coverage per unit	2.87 ft <sup>2</sup>	0.27 m <sup>2</sup>
Lineal coverage per unit	4.49 ft	1.37 m

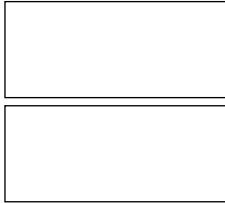
Coverage	13.5 ft <sup>2</sup>	1.26 m <sup>2</sup>
Lineal Coverage	21.45 ft	6.56 m
Weight	2226 lbs	1009.8 kg
Units	6	-
Coverage per unit	2.25 ft <sup>2</sup>	0.21 m <sup>2</sup>
Lineal coverage per unit	3.57 ft	1.09 m

Coverage	13.23 ft <sup>2</sup>	1.2 m <sup>2</sup>
Lineal Coverage	19.68 ft	6 m
Weight	2982 lbs	1352.4 kg
Units	6	-
Coverage per unit	2.1 ft <sup>2</sup>	0.2 m <sup>2</sup>
Lineal coverage per unit	3.28 ft	1 m

# RIDGEWALL®

LARGE SEGMENTAL RETAINING WALL SYSTEM

## BUNDLE OVERVIEW (ALL UNITS)



## NOTES

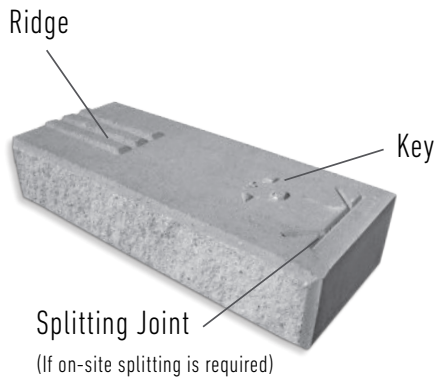
When installing the Ridgewall, install units ridge-to-ridge and key-to-key where possible. Can be installed vertically or with 50mm set-back. Engineering services available, call 1-800-BESTWAY (237-8929) or contact your sales rep for more information.

## COLOURS

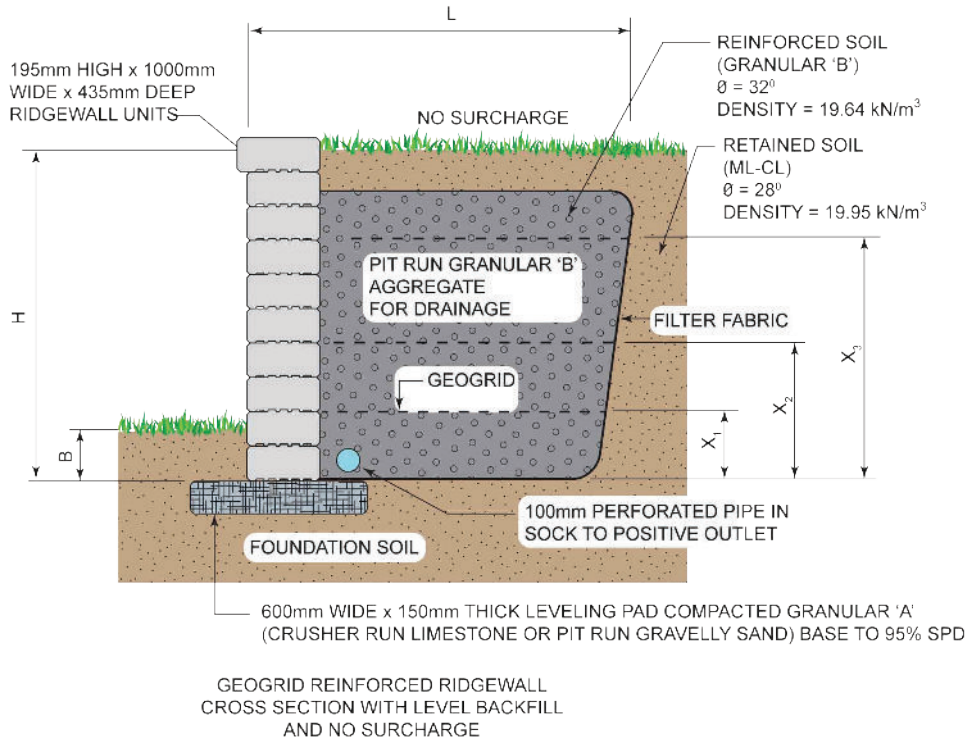
Beige Mix\*  
Grey  
Grey Mix\*

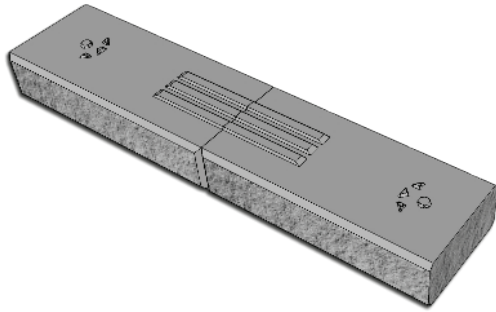
\*Only available in coping unit

## RIDGE & KEY SYSTEM

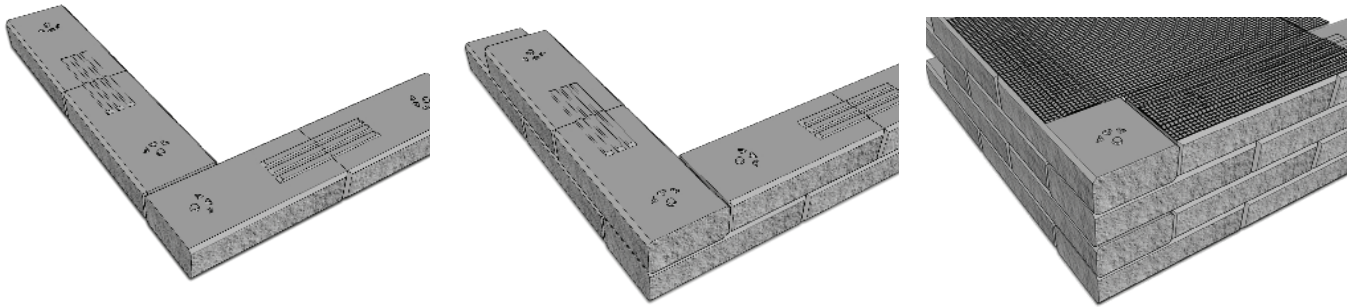


## TYPICAL CROSS SECTION

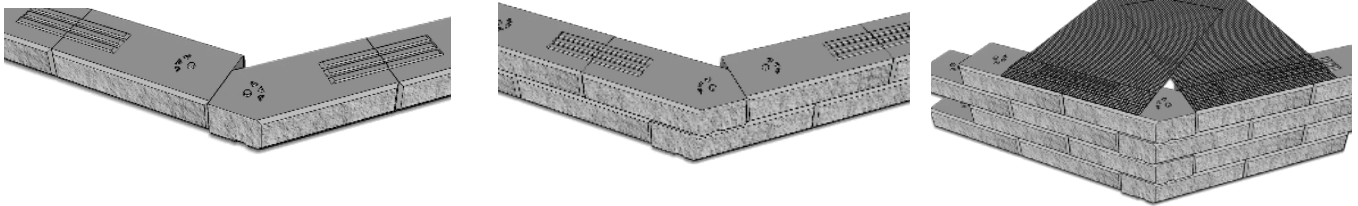




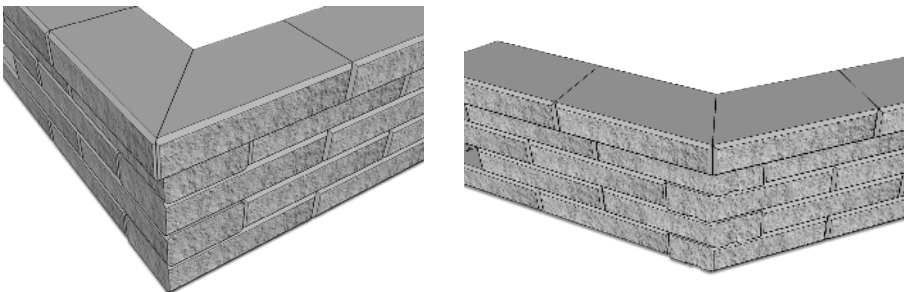
Ridge-to-Ridge & Key-to-Key Installation (Best Practice where possible)



90 Corner - Row 1 & 2 (Continue same sequence for following rows) + typical grid placement



45 Corner - Row 1 & 2 (Continue same sequence for following rows) + typical grid placement



90 & 45 Corner - Finished