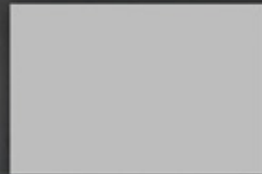


E100™ Series Pre-Colored Epoxy Coatings

E100™ Series Pre-Colored Epoxy Coatings are perfect for:

- Industrial and commercial buildings
- Manufacturing facilities
- Warehouses
- Pharmaceutical
- Institutional
- Loading dock areas
- Airplane hangars
- Auto service bays
- Food processing and storage
- Commercial kitchens
- Laboratories
- Showrooms
- Veterinarian clinics
- Freezers and coolers
- Firehouse and police departments
- Correctional facilities
- Highways and bridge decks
- Marine equipment
- Chemical plants
- Primary and secondary chemical containment and splash/spill zones



Light Gray



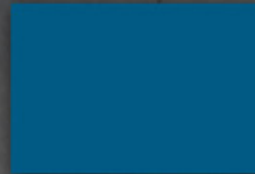
Tan



Red



Medium Gray



Country Blue



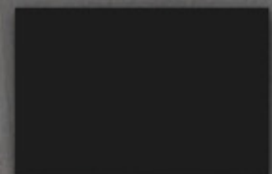
White



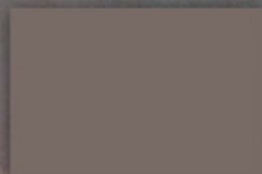
Dark Gray



Forest Green



Black



Brown



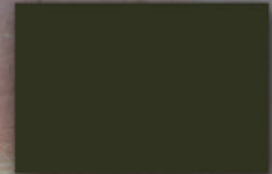
Nevada Clay



Safety Yellow

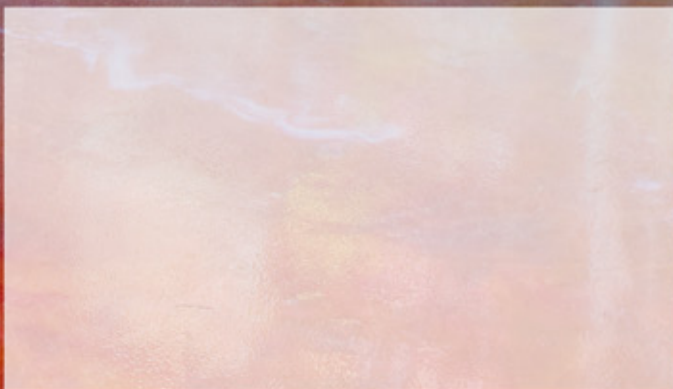


Burnt Orange



Army Green

For more information or to place an order, contact your local Elite Crete Systems sales representative:



Note: The colors on this chart are represented as closely as possible. Variations should be expected due to differences in: substrate condition, thickness of application, speed of curing, blending of colors, application method and color of initial primer coat. For additional information, see all related Product Information and Technical Data sheets located at www.elitecrete.com.

elite crete systems

E100™ Series Pre-Colored Epoxy Coatings



Benefits of E100™ Series Pre-Colored Epoxy Coatings

- Chemical and abrasion resistant
- Additional high chemical resistant options
- Non-slip anti-skid options for wet or oil saturated floors
- Completely seamless and monolithic
- Structural repair systems for cracks, spalls and joint restoration
- Patching, re-grading and leveling systems included
- Affordable and cost effective
- Extreme durability for high traffic areas
- Very low maintenance compared to other flooring products
- Quick installation time means less down time
- VOC free options- being "Green" is important to you and important to us
- Can be installed pre or post construction
- For new or existing concrete floors



elite crete systems