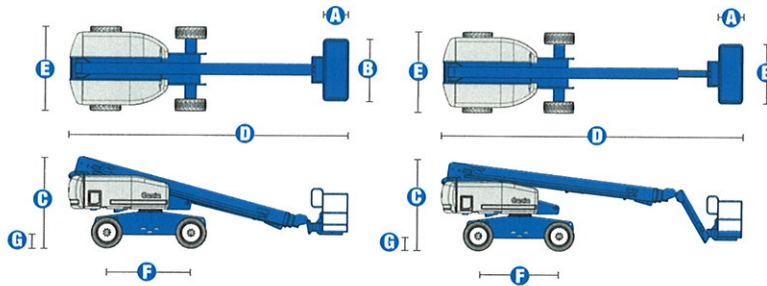


Specifications



| MODELS | S™-60 | | S™-65 | |
|---------------------------------------|-------------|---------|-------------|---------|
| MEASUREMENTS | US | Metric | US | Metric |
| Working height maximum* | 66 ft | 20.30 m | 71 ft | 21.80 m |
| Platform height maximum | 60 ft | 18.30 m | 65 ft | 19.80 m |
| Horizontal reach maximum | 50 ft 10 in | 15.48 m | 56 ft 2 in | 17.10 m |
| Below ground reach | 5 ft 7 in | 1.70 m | 8 ft 11 in | 2.72 m |
| A Platform length - 8 ft model | 3 ft | .91 m | 3 ft | .91 m |
| Platform length - 6 ft model | 2 ft 6 in | .76 m | 2 ft 6 in | .76 m |
| B Platform width - 8 ft model | 8 ft | 2.44 m | 8 ft | 2.44 m |
| Platform width - 6 ft model | 6 ft | 1.83 m | 6 ft | 1.83 m |
| C Height - stowed | 8 ft 11 in | 2.72 m | 8 ft 11 in | 2.72 m |
| D Length - stowed | 27 ft 11 in | 8.51 m | 31 ft 2 in | 9.50 m |
| Length - transport (jib tucked under) | | | 25 ft | 7.60 m |
| E Width (with standard tires) | 8 ft 2 in | 2.50 m | 8 ft 2 in | 2.50 m |
| F Wheelbase | 8 ft 2.5 in | 2.50 m | 8 ft 2.5 in | 2.50 m |
| G Ground clearance - center | 1 ft 2.5 in | .37 m | 1 ft 2.5 in | .37 m |

| PRODUCTIVITY | | | | |
|----------------------------------|----------------------|----------|----------------------|----------|
| Lift capacity | 500 lbs | 227 kg | 500 lbs | 227 kg |
| Platform rotation | 160° | | 160° | |
| Turntable rotation | 360° continuous | | 360° continuous | |
| Turntable tailswing | 4 ft | 1.22 m | 4 ft | 1.22 m |
| Drive speed - 2WD stowed | 4.0 mph | 6.4 km/h | 4.0 mph | 6.4 km/h |
| Drive speed - 4WD stowed | 3.0 mph | 4.8 km/h | 3.0 mph | 4.8 km/h |
| Drive speed - raised or extended | 0.68 mph | 1.1 km/h | 0.68 mph | 1.1 km/h |
| Gradeability - 2WD - stowed** | 30% | | 30% | |
| Gradeability - 4WD - stowed** | 45% | | 45% | |
| Turning radius - inside | 7 ft 9 in | 2.36 m | 7 ft 9 in | 2.36 m |
| Turning radius - outside | 18 ft 2 in | 5.54 m | 18 ft 9 in | 5.72 m |
| Controls | 12 V DC proportional | | 12 V DC proportional | |
| Tires - RT Lug | 355/55D 625 | | 355/55D 625 | |

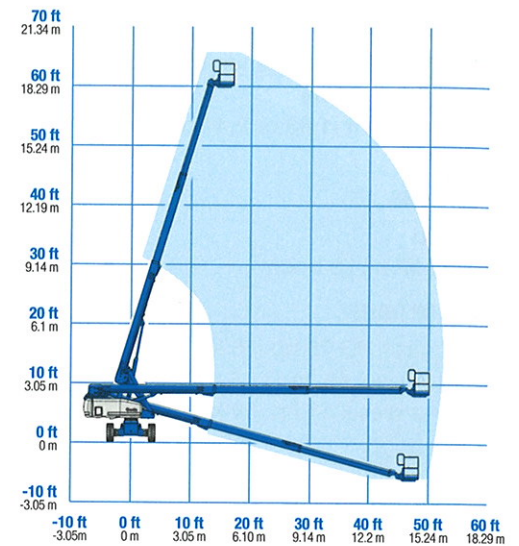
| POWER | | | | |
|-------------------------|--|-------|---------|-------|
| Power source | Ford DSG-423 4 cylinder gas/LPG 75 hp (56 kW) Deutz F3L-2011 3 cylinder diesel 48 hp (35.8 kW) Perkins 404C-22 4 cylinder diesel 51 hp (38 kW) | | | |
| Auxiliary power unit | 12 V DC | | 12 V DC | |
| Hydraulic tank capacity | 45 gal | 170 L | 45 gal | 170 L |
| Fuel tank capacity | 35 gal | 132 L | 35 gal | 132 L |

| WEIGHT*** | | | | |
|-----------|------------|----------|------------|-----------|
| 2WD | 20,520 lbs | 9,308 kg | 22,100 lbs | 10,024 kg |
| 4WD | 20,690 lbs | 9,385 kg | 22,270 lbs | 10,102 kg |

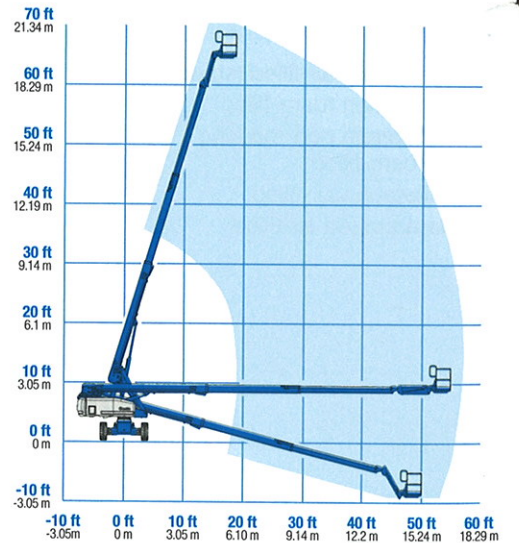
STANDARDS COMPLIANCE

ANSI A92.5, CSA B354.4, CE Compliance, AS 1418.10, PB-10-611-03

RANGE OF MOTION S™-60



RANGE OF MOTION S™-65



* The metric equivalent of working height adds 2 m to platform height. U.S. adds 6 ft to platform height.

** Gradeability applies to driving on slopes, see operator's manual for details regarding slope ratings.

*** Weight will vary depending on options and/or country standards.