

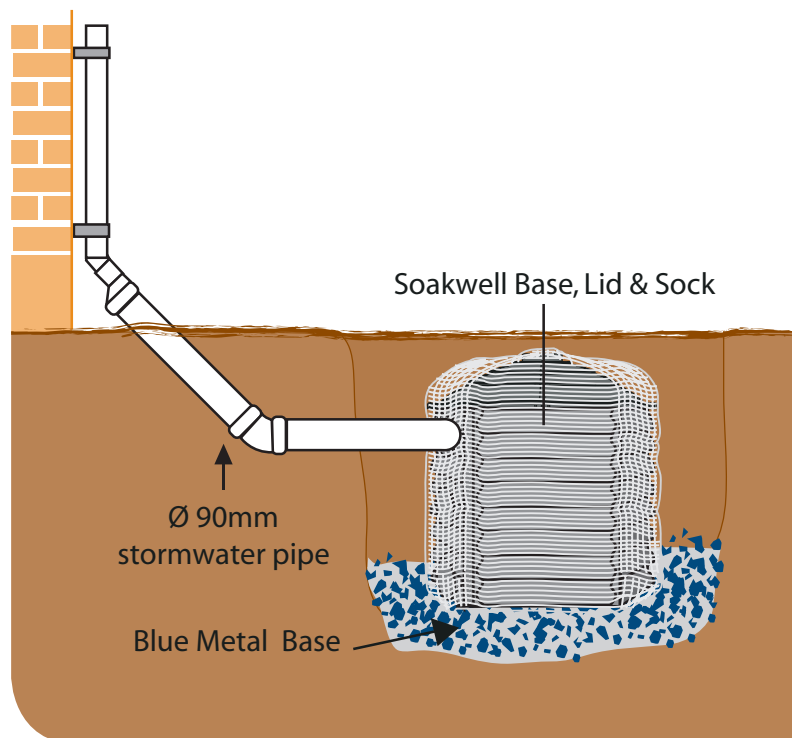
Soakwell

Rapid Flow



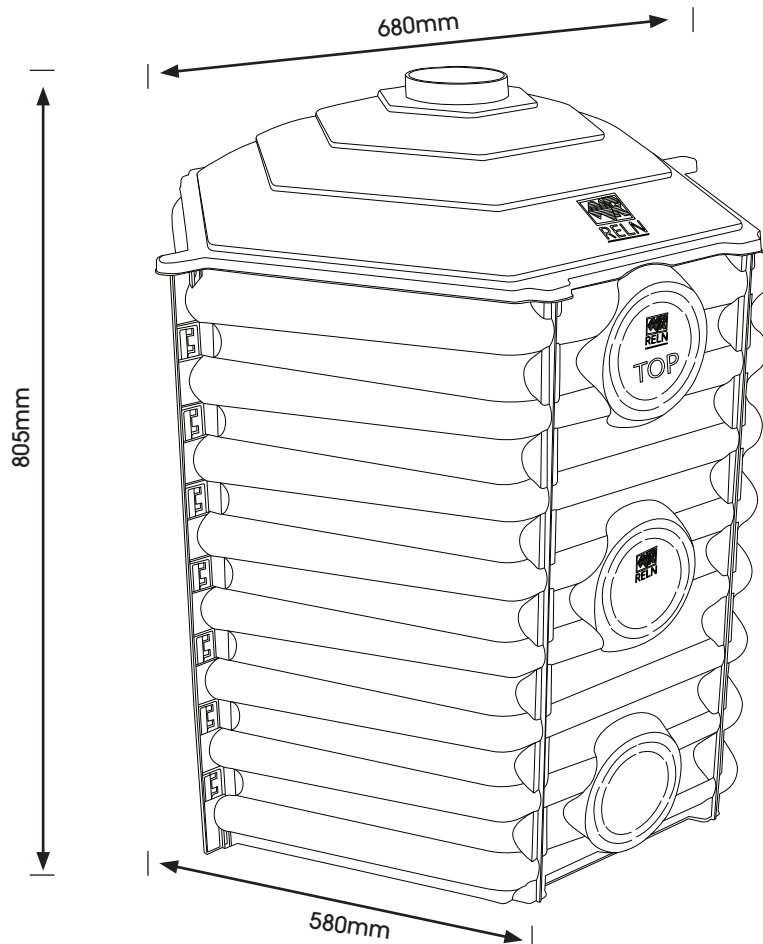
RELN Soakwell

- Light-weight and easy to install
- Strong beehive design, manufactured in high strength reinforced polymer
- Easy to assemble
- Designed to withstand ground pressure
- Drainage slots provide maximum water flow to surrounding soil



Soakwell

RELN Soakwell quickly clears water in sandy soil. Ideal for distributing surfacewater from down pipes into the ground and surrounding soil, Soakwell consists of a base, lid and sock with knockout centre or bottom inlet/outlet for controlled flow.



- Lightweight, easier to install
- Strong beehive design, manufactured in high strength reinforced polymer
- Easy to assemble
- Designed to withstand ground pressure
- Drainage slots designed to provide maximum water flow to surrounding soil

Range: Soakwell Base, Lid, Sock, Enviro Pack

Display: Hang Pads available

> Frequently Asked Questions

Q1. Where can a Soakwell be used?

A. Soakwells are great for areas housed on sandy soils. Soakwells disperse water into the surrounding soil from the downpipe of your house/building.

Q2. Why is it a beehive shape?

A. The beehive shape allows the Soakwell to withstand ground pressure.

Q3. Can more than 1 Soakwell be aligned?

A. Yes. The Soakwell has multiple outlets that can be knocked out for the attachment of another Soakwell.

Q4. Why do I need a Soakwell Sock?

A. The Soakwell Sock stops sand entering the Soakwell. It also eliminates the need to backfill with blue metal aggregate.



Soakwell - Base

Product Code: 000865

Weight: 3kg



Soakwell - Lid

Product Code: 000866

Weight: 1.4kg



Soakwell - Sock

Product Code: 001245

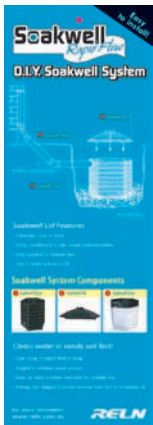
Weight: 0.1kg



**Soakwell - Enviro Pack
complete with 1x Soakwell
Base, 1x Soakwell Lid,
1x Soakwell Sock, 1x 6m
Stretch Drain 100mm Solid**

Product Code: 000017

Weight: 6.7kg



**POS Material for RELN
Soakwell - Rapid Flow Pad**

Product Code: 000864



Soakwell

Rapid Flow

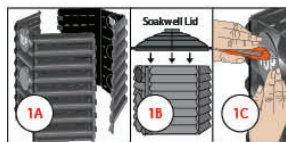
D.I.Y. Soakwell System Planner

Design your own drainage system with Soakwell

COMPONENT		QTY.	CHECK
1 Soakwell Base			<input type="checkbox"/>
2 Soakwell Lid			<input type="checkbox"/>
3 Soakwell Sock			<input type="checkbox"/>

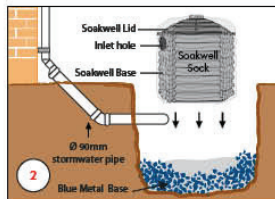
Installation Instructions for Soakwell System

Easy Installation in 3 simple steps



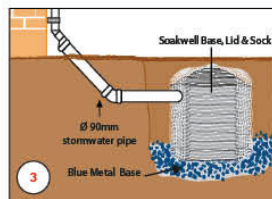
1. ASSEMBLE BASE AND "NEW" SOAKWELL LID

Assemble sides of the Soakwell Base by inserting tabs and pushing lock clips together – both sides "TOP" up. Cut out "TOP" inlet hole. Fit "NEW" Soakwell Lid to the Base.



2. FIT SOAKWELL SOCK

Fit Soakwell Sock over the top of assembled Base and Lid. Cut inlet hole in Sock to fit pipe through.



3. INSTALL

Place assembled Soakwell in a one metre hole with a base of 100mm blue metal. Connect to storm water pipe. Backfill hole and cover.